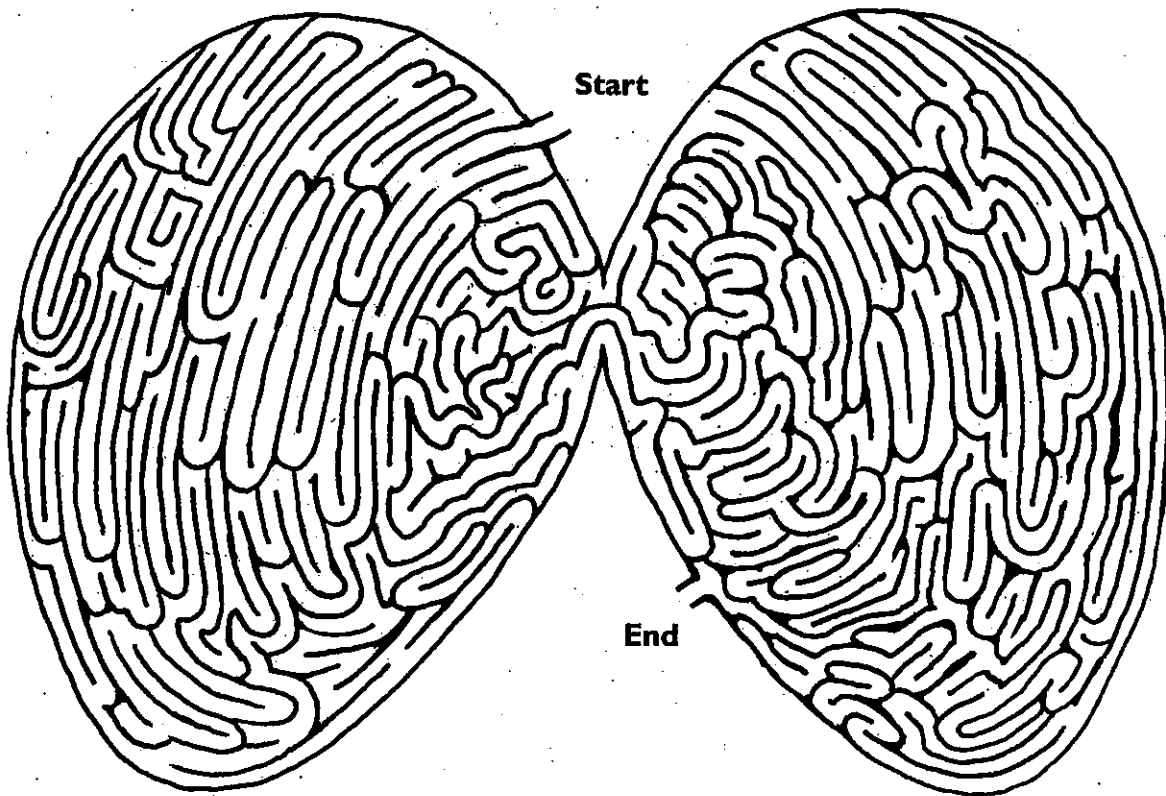
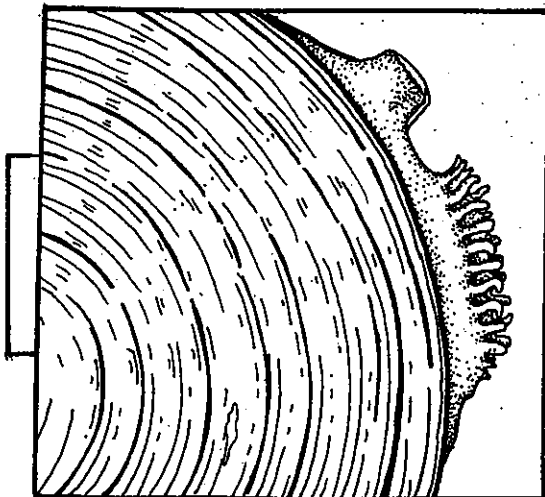


Find your way through the freshwater mussel maze!



Although it's hard to believe, some **freshwater mussels** can live for more than **150 years**. They continue to grow throughout life, and as they grow their shell forms rings. The rings are similar to those on the inside of a tree trunk that can be used to guess the age of the tree. In a similar manner, the rings on a freshwater mussel shell can be used to estimate the age of a freshwater mussel.

Growth rings of a freshwater mussel



Tree Trunk Rings

