

GILL'S
FORTY-THIRD
ANNUAL
EXHIBITION

1920

SPRINGFIELD



10
10

Springfield National Bank

321 and 323 Main Street and 248 Bridge Street

Capital, \$500,000.00 Surplus and Profits, \$1,000 000 00
Deposits, \$8,000,000.00

HENRY H. BOWMAN, Pres. WALLACE V. CAMP, Cashier
RALPH P. ALDEN, Vice-Pres. PHILIP S. BEEBE, Asst. Cashier
ERNEST J. WHEELER, Asst. Cashier
WINSOR B. DAY, Mgr. Savings Dept.

A SPRINGFIELD INSTITUTION, ORGANIZED AS
A NATIONAL BANK, UNDER THE LAWS,
CONTROL AND SUPERVISION OF THE UNITED
STATES GOVERNMENT

If you are not already a depositor in this bank we would
be pleased to have you open an account.

Interest allowed on daily balances of special deposits,
subject to check.

Savings Department, 4% interest, beginning the first of
each month.

Small personal and household accounts received.

This bank is a depository of the United States, State
of Massachusetts, County of Hampden and City of
Springfield.

Member of Federal Reserve Bank.

Safe Deposit Boxes \$3.00 per Year and Upwards

A cordial invitation is extended to all to visit our fine
vault.

DIRECTORS

CLIFTON A. CROCKER
ROBERT W. DAY
WILLIAM O. DAY
RALPH W. ELLIS
WILLIAM C. GODFREY
WARREN D. KINSMAN
FRED T. LEY

G. FRANK MERRIAM
FRANK H. PAGE
FRANK G. TOBEY
CHAS. E. VAN NORMAN
HARRY G. WEBSTER
EDWARD H. WILKINSON
HENRY H. BOWMAN

RALPH P. ALDEN

1849

This Home Institution is the

1920

Largest Fire Insurance Company
Chartered by the State of Massachusetts

Incorporated 1849

Charter Perpetual

SPRINGFIELD
FIRE AND MARINE
INSURANCE COMPANY
of Springfield, Mass.

Cash Capital 2,500,000 Dollars

DIRECTORS

J. L. PEASE	A. W. DAMON
M. S. SOUTHWORTH	FREDERICK HARRIS
HOMER L. BOSWORTH	EMERSON G. GAYLORD
W. D. KINSMAN	GEO. G. BULKLEY
W. A. HARRIS	A. F. DEAN, of Chicago

OFFICERS

A. W. DAMON, Pres.	W. B. CRUTTENDEN	Ass't Sec'y
GEO. G. BULKLEY, Vice Pres.	WM. A. HEBERT, Ass't Sec'y	
E. H. HILDRETH, Secretary	C. L. GARNETT, Ass't Sec'y	
F. H. WILLIAMS, Treas.		
F. A. SCHLESINGER, Ass't Treas.		

Springfield Agents:
OPPENHEIMER & FIELD,
289 Main Street

Sixty-Eighth Annual Statement
of the
Massachusetts Mutual Life
Insurance Company

Springfield, Massachusetts
YEAR ENDING DECEMBER 31, 1919
on the basis of Paid-for Insurance

Income	
Premiums,	\$ 18,820,128
Interest, rents, and all other income,	7,010,466
Total income,	\$ 25,830,594

Disbursements	
To policyholders and beneficiaries:	
Death claims,	\$ 5,545,621
Matured endowments,	402,755
Surrender values,	1,528,281
Dividends to policyholders,	3,540,803
Life and disability annuities,	10,057
	\$11,027,517
Money borrowed in 1918 (for purchase of Liberty Loan Bonds), repaid,	4,100,000
Other disbursements,	5,302,289
Total disbursements,	\$ 20,429,806

Assets,	\$118,666,373
Liabilities,	113,335,032
Surplus,	5,331,341
New Insurance,	131,103,768
Increase in New Insurance,	67,578,139
Insurance in Force,	601,068,160
Increase in Insurance in Force,	110,274,869

Of the new insurance written, only 16% was required to replace the insurance terminated during the year, and 84% represents the increase in insurance in force. The actual mortality experience for the year was 57.21% of the expected.

Home Office Agency:
Richards & Allis, Managers
802 Mass. Mutual Building, Springfield, Mass.

Albert Steiger Company

"A Store of Specialty Shops"

SPRINGFIELD, MASS.

A Rarely Beautiful Collection of

RUGS AND DRAPERIES

Is Assembled in Our Third Floor Shops

Well chosen Rugs and Draperies presenting a rare assemblage of rich colorings and designs are here in fascinating variety

Handsome Cretonnes, Velours, Tapes-tries and Sunfast suitable for window drapery, furniture coverings, portieres, pillows and other interior decoration.

High Grade Rugs including Axminster, Wilton Velvet and other well-known grades in every desired size

STEIGER'S

Third Floor

Forbes & Wallace

THE ANNUAL FEBRUARY SALE OF FURNITURE

RIVALS ALL PREVIOUS EVENTS IN THE SOUNDNESS OF ITS PREPARATIONS—THE VOLUME OF ITS STOCKS—THE UNMATCHED VALUES

The Greatest Event of Its Kind in Our History

Our Furniture Sales have been built on quality—first, last and always. The extreme breadth of our stocks—which are prepared to meet every need—includes the finest individual designs of master Furniture craftsmen, to the inexpensive kinds of tasteful modern design or period reproductions—but notwithstanding price, we guarantee quality in every single piece of this tremendous stock.

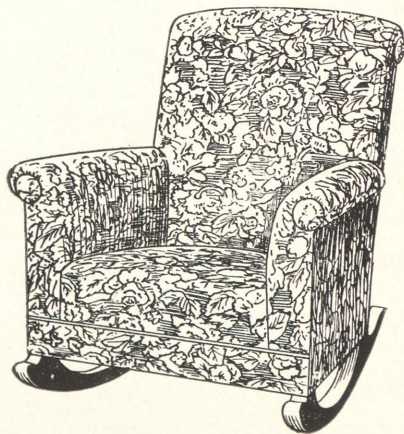
Forbes & Wallace

Meekins, Packard & Wheat INC.

WHEREAS IS OBTAINABLE

***MEEKINS FURNITURE
OF CHARACTER***

Noted for its standard of excellence in every
degree and price; and expressive of



ART

In Design

STRENGTH

In Construction

COMFORT

In Appointment

FOURTH AND FIFTH FLOORS

**SHOES
SLIPPERS
HOSIERY**

Of Quality and Fashion

THE
Largest Assortment

In Western Massachusetts

MAIL ORDERS

Given Expert Attention

Correct Fitting Assured

THOMAS S. CHILDS

INCORPORATED

275 High St.

Holyoke, Mass.

A Springfield Institution
for Nearly a Century

Springfield Republican

“All the News and
the Truth About It”

Daily (Morning), \$8

Sunday, \$2.50

Weekly, \$1.50

Served by the Associated Press

*The Leading Newspaper in
the Field of Journalism
in Western Massachusetts*

The Springfield Union



*The Union devotes
generous space to*

MUSIC
LITERATURE
and ART

DETAILS of worth-while artistic events, both in the local and wider fields, written by thorough masters of their subjects, together with a reliable news service, well-considered editorials, good, clean humor, and many other features, combine to make THE UNION the favorite newspaper in the field in which it circulates. People rely on THE UNION to keep intelligently informed especially in this presidential year and the great era of
R E C O N S T R U C T I O N

MORNING
2c

SUNDAY
6c

EVENING
2c

Art For Art's Sake

Where "Beauty is its own excuse for being."



EXEMPLIFIED at The Hall Store in the Foreign Room, where decorative pieces of China and Porcelain show a marvelous regard for beauty of detail; in the Mahogany Room, where exquisite hand tooled, hammered and etched designs are shown on Sterling Silver; in the Pottery Nook, where Tiffany Favrite Glass and Rookwood Pottery display the finest artistic sense in the application of form and color.

CHARLES HALL, Inc.

The Hall Building

"Natural" vs. "Manufactured" Ice

"Thirty-four samples of ice were examined and the average number of bacteria per cubic centimeter was found to be 118 in the natural ice and in artificial ice 123."—*U. S. Government Bulletin No. 35 of the Hygienic Laboratory, Washington, D. C.*

THE PROPER USE OF ICE PREVENTS Food Wastage!

The laws in most States now prohibit articles which have been in cold storage and then removed therefrom, from being placed again back in storage, for the simple reason that it has been found that the food deteriorates so rapidly in such circumstances as not to be safe for human consumption. And yet the housewife who resorts to a window-box for keeping food in place of a refrigerator is freezing and thawing her food sometimes several times a day.

Food Conservation!

The use of our "CERTIFIED" Natural Ice avoids this danger and prevents food wastage, as proper refrigeration promotes economy and helps lower the cost of living.

Offices:
47 Dwight St.
195 Alden St.



Telephone:
River 4184

The New and Beautiful



HOTEL BRIDGWAY

Bridge Street and Broadway
SPRINGFIELD

The Most Modern Hotel in this vicinity—for Beauty,
Comfort and Efficient Service.

Business Men's Lunch, 12 to 2.30, 75c

Dinner, 6 to 8.30, \$1.50

Informal Dancing Every Evening from
10 to Midnight

Excellent Music by the Bridgway Orchestra

GEORGE A. LEONARD

Vice-President and Resident Manager

The Exhibition

The best information available is needed and desired by conservative investors in pictures as well as in other securities.

An acquaintance of more than forty years with the artists and their work has brought knowledge and experience which protect my patrons.

At the inauguration of this long and creditable series of annuals dealers throughout the country devoted themselves almost exclusively to the selling of foreign paintings, whereas now there are several who specialize in work by American artists, and they believe that it will in the future command a greatly increased price, particularly the best examples by the leading painters, many of whom, while yet young, are talented and promising.

I believe this, the 43d annual, is one of the best of the series, comprising, as it does, many examples not only suitable for the adornment of a refined home, but such as will distinguish the purchaser and prove a pleasurable and profitable investment.

Sincerely yours,

A handwritten signature in cursive script, appearing to read "James D. Gill".

ARTISTS REPRESENTED

BLENNER	HALE	POOKE
BOGGS	HARRISON	POST
BRUESTLE	HENRI	POTTHAST
CARLSON	HOWE	POWELL
CHAPMAN	KIRKPATRICK	RANGER
CHURCH	KNIGHT	REDFIELD
CHURCHILL	KOST	ROBINSON
COFFIN	KRONBERG	SHEPPARD
COOPER, C. C.	LA VALLEY	SHURTLIFF
COOPER, E. L.	LAWSON	SMILLIE
COUSE	LEIGH	SMITH, E. G.
CRAIG	LIE	SMITH, W. G.
CRANE	LOW, M. F.	SNELL
CURRAN	LOW, W. H.	SYMONS
DERRICK	MCCORD	TWACHTMAN
DEVOLL	METCALF	TYLER
DICKINSON	MOSLER	VALENKAMPF
EATON, C. H.	MURPHY	VAN BOSKERCK
EATON, C. W.	OCHTMAN, D.	VAN LAER
EDDY	OCHTMAN, L.	VONNOH
EGGLESTON	OCHTMAN, M. F.	WATROUS
ENNEKING	OLINSKY	WAUGH
GAY	PALMER	WYANT
GROLL	PAXTON	YATES
GRUPPE	PERKINS	YOUNG

GILL'S

FORTY-THIRD EXHIBITION

OF

American Paintings

ON VIEW IN

GILL'S ART ROOMS

121 STATE STREET, SPRINGFIELD, MASSACHUSETTS

OPENS

Thursday, February Fifth

CLOSES

Saturday, February Twenty-eighth

*Open every day, 10 a.m. until 5 p.m., and
Saturdays until 9.30 p.m.*

ADMISSION, 25 CENTS

Illustrated catalogue, with biography of each artist
and the price of each picture, 25 cents

Telephone River 875

Copyright, 1920, by James D. Gill



No. 35

The Fan W. A. B. Kirkpatrick

CATALOGUE

N.A.—National Academician
 A.N.A.—Associate National Academy of Design
 S.A.A.—Society of American Artists
 P.A.F.A.—Pennsylvania Academy of Fine Arts

PRICES INCLUDE FRAME AND DELIVERY

1

Knitting

\$250

CARLE J. BLENNER

Born in Richmond, Va., February 1, 1864. Pupil of Yale Art School, Bouguereau, Robert Fleury and Aman-Jean in Paris. The Saviour, Philadelphia, Pa. Awards: Medal, Boston Art Club, 1891; Third Hallgarten Prize; N.A.D., 1899; Honorable Mention, Pan-American Exposition, Buffalo, 1901; Bronze Medal, St. Louis Exposition, 1904. Specialty, portraits and ideal heads.

2

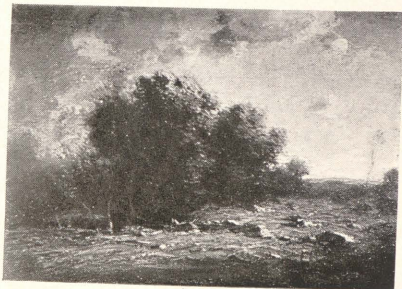
On the Seine

\$500

FRANK M. BOGGS

Born at Springfield, Ohio, 1855. Pupil of Ecole des Beaux Arts and of Gerome in Paris. Awards: \$2500 Prize at Competitive Exhibition in New York, 1885; Silver Medal, Paris Exposition, 1889. Work: "A Rough Day," Harbour of Honfleur," Museum of Fine Arts, Boston; "On the Thames," Metropolitan Museum, New York.

3



Morning Sunlight

\$150

GEORGE M. BRUESTLE

Born in New York, December 22, 1872. Pupil of A.S.L. of New York, under Mowbray; Colarossi Academy, under Courtois and of Aman-Jean in Paris. Member: Artists' Club of Lyme, Conn. Work: "Afternoon Landscape," Gibbes Memorial Museum, S. C.

4

Snowy Brookside

\$1000

JOHN F. CARLSON, A.N.A.

Born in Sweden, 1875. Member: A.N.A., 1911; N.Y.W.C.C.; A.W.C.S.; Salmagundi Club. Awards: First Prize, Swedish-American Exposition, Chicago, 1911 and 1913; Vezin and Isidor Prizes, Salmagundi Club, 1912; Silver Medal, Washington S.A., 1913; Silver Medal, P.-P. Exposition, San Francisco, 1915. The Carnegie Prize (\$500) N.A.D. Winter Exhibition, 1918-19, for the most meritorious oil painting in the Exhibition by an American Artist. Work: "Woods in Winter," Corcoran Gallery, Washington, D. C. Instructor: Art Students' League Landscape School, Woodstock, N. Y.

5

On the Banks of Arun

\$400

6

Evensong

\$600

CARLTON T. CHAPMAN, N.A.

Born in New London, Ohio, September 8, 1860. Pupil of N.A.D. and A.S.L. of New York; Julien Academy in Paris. Member: A.N.A., 1900; S.A.A. 1892; A.W.C.S.; A. Fund S.; Century Assoc.; Lotos Club. Awards: Silver Medal, Boston, 1892; Medal, Columbia Exposition, 1893; Medal, Atlanta Exposition, 1895; Bronze Medal, Pan-American Exposition, Buffalo, 1901; Bronze Medal, Charleston Exposition, 1902. Work: "A Rocky Coast," Toledo Museum; "Calm in Gloucester Harbor," Brooklyn Institute Museum.

7

Appreciation

\$250

FREDERICK S. CHURCH, N.A.

Born at Grand Rapids, Mich., 1842. Pupil of Chicago Academy of Design; L. E. Wilmarth, and Walter Shirlaw, N.A.D., and A.S.L. in New York. Member: A.N.A., 1883; N.A., 1885; S.A.A., 1890; A.W.C.S.; S.I. (hon.), 1910; Lotos Club; N. Y. Etching Club. Work: "The Black Orchard," National Gallery, Washington, D.C.; "Moonrise," Metropolitan Museum, New York; "Flamingoes," Art Museum, Montclair, N.J.; "Sirens," Hackley Art Gallery, Muskegon, Mich., and "Sirens," St. Louis City Art Museum.

8

An Interior

\$600

WILLIAM W. CHURCHILL

Born in Boston. Pupil of Bonnat in Paris. Member of Boston Art Club. Awards: Honorable Mention, Pan-American Exposition, Buffalo, N. Y., 1901; Honorable Mention, P.-P. Exposition, San Francisco, 1915.

9

Morning

\$1200

WILLIAM A. COFFIN, N.A.

Born in Allegheny, Pa., 1855. Pupil of Bonnat in Paris. Member: A.N.A., 1898; N.A., 1912; S.A.A., 1886; Architects' League, 1888; Lotos Club; Union League Club; Soc. des Artistes Francais (hon.), 1915; Soc. Nat. des Beaux-Arts (hon.), 1915; Fraternite des Artistes (hon. pres.), 1916; Director Art Dept., Pan-Am. Exp., Buffalo, 1901. Awards: Second Hallgarten Prize, N.A.D., 1886; Bronze Medal, Paris Exp., 1889; Webb Prize, S.A.A., 1891; Gold Medal, A.C., Phila., 1898; Silver Medal, St. Louis Exp., 1904; Silver Medal, at Charleston Exp., 1902; Gold Medal, N.A.C., 1916; Work: "The Rain," Metropolitan Museum, New York; "At Break of Day," Buffalo Fine Arts Academy; "September," National Gallery, Washington, D. C.; "A Maple in Spring," Municipal Gallery, Venice, Italy; "Oaks—October," Municipal Gallery, Montclair, N. J.; "A Thunder Storm" and "October Morning," Brooklyn Institute Museum.

10

A Spanish Dancer

\$700

COLIN CAMPBELL COOPER, N.A.

Born in Philadelphia, 1856. Pupil of P.A.F.A.; Julien and Delecluse academies in Paris. Member: A.N.A., 1908; N.A., 1912; New York W.C.C.; A.C., Philadelphia; Philadelphia W.C.C.; Salmagundi Club; A.W.C.S.; Fellowship P.A.F.A.; Lotos Club. Awards: Bronze Medal, Atlanta Exposition, 1895; Evans Prize, A.W.C.S., 1903; Sesnan Prize, P.A.F.A., 1904; Gold Medal, A.C.P., 1905; Silver Medal, Buenos Aires Exposition, 1910; Beal Prize, New York W.C.C., 1911. Work: "Broad Street, New York," Cincinnati Museum; "The Flatiron, New York," Dallas, Texas, Art Association; "Grand Basin, World's Fair" and "The Plaza, New York," St. Louis Museum of Fine Arts; "Basilica, Quebec," Boston Art Club; "Procession at Bruges," Art Club of Philadelphia; "The Rialto," Lotos Club, New York.

11



Bridge Near Florence, Italy

\$400

EMMA LAMPERT COOPER

Born at Nunda, N. Y. Pupil of Harry Thompson in Paris; J. Keverin, Holland; Chase in New York. Member: Plastic Club; Philadelphia W.C.C.; Fellowship P.A.F.A.; N.Y.W.C.C.; A.W.C.S.; N.Y.W.A.C.; W.A.A. of Canada; Women's International A.C. of London. Awards: Medal, Columbian Exposition, Chicago, 1893; Atlanta Exposition, 1895; Gold Medal, A.A.S., 1902; Bronze Medal, St. Louis Exposition, 1904; Prize N. Y. Woman's A.C., 1907.

12

The Ute Water Bottle

\$1500

E. IRVING COUSE, N.A.

Born in Saginaw, Mich., 1866. Pupil of N.A.D. in New York; Bouguereau, Robert Fleury and Ecole des Beaux-Arts in Paris. Member: A.N.A., 1902; N.A., 1911; N.Y.W.C.C.; A.W.C.S.; Salmagundi Club; Lotos Club (life); N.A. Club (life). Awards: Shaw Prize for black and white at Salmagundi Club, 1899; Second Hallgarten Prize, N.A.D., 1900; Proctor Prize, Salmagundi Club, 1900; Hon. Mention, Pan-Am. Exp., Buffalo, 1901; First Hallgarten Prize, N.A.D., 1902; Osborne Competition Prize (\$500), 1903; two Bronze Medals, St. Louis Exp., 1904; Lotos Club Purchase Prize, 1910; Isidor Gold Medal, N.A.D., 1911; Carnegie Prize (\$500), N.A.D., 1912; Silver Medal, P.-P. Exp., San Francisco, 1915; Altman Prize N.A.D., 1916; Isidor Prize (\$100), Salmagundi Club, 1917. Specialty, Indians. Work: "Elkfoot," Nat. Gallery, Washington; "The Forest Camp," Brooklyn Institute Museum; "An Indian Courtship," Montclair (N. J.), Art Gallery; "Medicine Fires," Dallas (Tex.) Museum; "Under the Trees," Smith College, Northampton, Mass.; "The Tom-Tom Maker," Lotos Club, New York; "Sheep at Evening," St. Paul (Minn.) Museum; decoration, "Adoration of the Shepherds," Grace Church, Harrisburg, Pa.; "Shappanagous, Chippewa Chief," Detroit Museum; "Song of the Flute," National Arts Club, New York; "Indian Courtship," Art Museum, Montclair, N.J.; "Indian Love Song," Brooklyn Institute Museum; "Making Pottery," Fort Worth (Tex.) Museum.

13



A Summer Day

\$300

THOMAS B. CRAIG, A.N.A.

Born in Philadelphia, Pa., 1849. Self-taught. Member: A.N.A., 1897; Salmagundi Club, 1902; Artists' Fund Society. Work: "Evening," Pennsylvania Academy of Fine Arts, Philadelphia, Pa.

- 14
- Early Autumn \$750
- BRUCE CRANE, N.A.
- Born in New York, 1857. Pupil of A. H. Wyant. Member: A.N.A., 1897; N.A., 1901; S.A.A., 1881; A.W.C.S.; A. Fund S.; Salmagundi Club, 1888; Lotos Club; Union Internationale des Beaux-Arts et des Lettres. Awards: Webb Prize, S.A.A., 1897; Bronze Medal, Paris Exp., 1900; Inness Medal, N.A.D., 1901; Silver Medal, Pan-Am. Exp., Buffalo, 1901; Silver Medal, Charleston Exp., 1902; Gold Medal, St. Louis Exp., 1904; Third Prize, C. I., Pittsburgh, 1909; Saltus Medal, N.A.D., 1912; Silver Medal, P.-P. Exp., San Francisco, 1915; Shaw Prize (\$500), Salmagundi Club, 1917. Work: "Autumn Uplands," Metropolitan Museum, New York; "November Hills," Carnegie Inst., Pittsburgh; "Autumn," National Gallery, Washington; "March," Brooklyn Institute Museum; "Autumn Hills," Montclair (N. J.) Gallery; "Springtime," Peabody Institute, Baltimore; "November Hillside," Corcoran Gallery, Washington, D. C.; "Last of Winter," Fort Worth (Tex.) Museum; "Autumn Meadowland," Hackley Art Gallery, Muskegon, Mich.
- 15
- The Path of Flowers \$1500
- CHARLES C. CURRAN, N.A.
- Born in Hartford, Ky., 1861. Pupil of Cincinnati School of Design; A.S.L. and N.A.D. in New York; Julien Academie under Constant, Lefebvre and Doucet in Paris. Member: A.N.A., 1888; N.A., 1904 (rec. sec.); N.Y.-W.C.C. (treas.); A.W.C.S.; S.A.A., 1888; Salmagundi Club; Lotos Club (life). Awards: Third Hallgarten Prize, N.A.D., 1888; Honorable Mention, Paris Salon, 1890; Clarke Prize, N.A.D., 1893; Second Hallgarten Prize, N.A.D., 1895; Medal, Columbian Exposition, Chicago, 1893; Silver Medal, Atlanta Exposition, 1895; Honorable Mention, Paris Exposition, 1900; Silver Medal, Pan-American Exposition, Buffalo, 1901; Carnegie Prize, S.A.A., 1904; First Corcoran Prize, S. Washington A., 1905; First Prize (\$500) Osborne Competition, 1905. Work: "Perfume of the Roses," National Gallery, Washington; "The Breezy Day," P.A.F.A., Philadelphia; "The Golden Hour," Museum of Art, Columbus (Ohio); "Building the Dam," Art Association, Richmond, Ind.; "The Jungfrau" and "The Swimming Pool," Toledo (Ohio) Museum of Art; "Children Catching Minnows," Buffalo (N. Y.) Fine Arts Academy.
- 16
- An Autumn Landscape \$175
- 17
- September \$600
- 18
- A Vermont Landscape \$1000
- WILLIAM ROWELL DERRICK
- Born in San Francisco, Cal., 1857. Pupil of Leon Bonnat, Boulanger and Lefebvre in Paris. Exhibits in the principal exhibitions in this country and France. Was instructor at the Gotham Art Students' League. Awards: Gold Medal from the American Art Society; Silver Medal at Philadelphia; \$100 cash prize, Connecticut Academy of Fine Arts at Hartford, 1916. Work: "The Plaza," National Art Gallery, Washington, D. C.

- 19
- Columbus Circle \$250
- F. USHER DE VOLL
- Born in Providence, R. I., 1873. Pupil of R. I. School of Design; Chase, Mowbray, and Henri in New York; Laurens, in Paris. Member: Providence A.C.; Conn. A.F.A.; Inter-Soc. A.L. Award: Silver Medal, P.-P. Exp., San Francisco, 1915. Work: "Autumn Landscape," R. I. School of Design, Providence; "Spring," Art Club, St. John, New Brunswick; "Winter in New England," Delgado Museum, New Orleans, La.
- 20
- Maggie the Octoroon \$750
- SIDNEY EDWARD DICKINSON
- Born in Wallingford, Conn., 1890. Pupil of Bridgman, Volk, and Chase. Member: Eclectics. Award: Third Hallgarten Prize, N.A.D., 1917. Work: "Self Portrait," Corcoran Gallery, Washington.
- 21
- Close of Day \$600
- CHARLES HARRY EATON, A.N.A.
- 1857-1901
- Born in Akron, Ohio, 1857. Self-instructed. First exhibited, N.A.D., 1881. Member of the Salmagundi Club and the American Art Union.
- 22
- Golden Glow \$500
- CHARLES WARREN EATON
- Born in Albany, N. Y., February 22, 1857. Pupil of N.A.D. and A.S.L. of New York. Member: A.N.A., 1901; A.W.C.S.; N.Y.W.C.C.; Salmagundi Club, 1897; Artists' Fund Society; Lotos Club. Awards: Honorable Mention, Paris Exposition, 1900; Proctor Prize, Salmagundi Club, 1901; Silver Medal, Charleston Exposition, 1902; Inness Prize, Salmagundi Club, 1902; Shaw Prize, Salmagundi Club, 1903; Gold Medal, Art Club of Philadelphia, 1903; Inness Gold Medal, N.A.D., 1904; Silver Medal, St. Louis Exposition, 1904. Work: "Dunes at Knocke, Belgium," Cincinnati Museum; "Gathering Mists," National Gallery, Washington, D. C.; "Connecticut Pines," Brooklyn Institute Museum.



No. 20

Maggie the Octoroon

S. E. Dickinson

23

The Red Inn

\$450

HENRY S. EDDY

Born in Rahway, N. J., 1878. Pupil of the Art Students' League and studied with John H. Twachtman, Douglas Volk, Kenyon Cox, Alphonse Mucha, and George Elmer Browne. Member: Salmagundi Club, New York, and The Beach Combers, Provincetown, Mass. Has exhibited at the National Academy of Design, Utica Public Library, and elsewhere, and has received favorable notices from the press, especially The New York World and New York Tribune.

24



Showery Weather

\$200

BENJAMIN F. EGGLESTON

Born in Belvidere, Minn., 1867. Pupil Minneapolis School of Fine Arts under Douglas Volk. Member: Brooklyn Art Club; Kit Kat Club; Salmagundi Club (1903). Has traveled extensively in England, Scotland, and France, and is an exhibitor at Paris Salon. Represented in Boston Art Club by his "Dreamy Summer."

Spring 25 \$800

JOHN J. ENNEKING
1841-1917

Born at Minster, Ohio, 1841. Died at Hyde Park, Mass., 1917. Returning from his studies at Munich (1875-76), and at Paris under Daubigny and Bonnat (1878-79), Mr. Enneking early achieved success by his vivid and exact presentment of nature. Member of the Jury on Fine Arts at World's Columbian Exposition, Chicago. Awards: four Gold and four Silver Medals at Massachusetts Charitable Mechanics Association; Honorable Mention, Exposition Universelle, Paris, 1900; Silver Medal, Pan-American Exposition, Buffalo, 1901; Gold Medal, Panama-Pacific Exposition, San Francisco, 1915.

26
Morning, Pelham Park \$100

EDWARD GAY, N.A.

Born in Dublin, Ireland, 1837. Pupil of James M. Hart in Albany, N. Y.; Schirmer and Lessing in Karlsruhe, Germany. Member: A.N.A., 1869; N.A., 1907; N.Y.W.C.C.; Artists' Fund Society; Lotos Club. Awards: Prize of \$2000 American Art Association Competition, 1887; Medal, Mid-Winter Exp., San Francisco; Medal, New Orleans Exp., 1885; Bronze Medal, Pan-Am. Exp., Buffalo, 1901; Shaw Purchase, S.A.A., 1903; Bronze Medal, St. Louis Exp., 1904; Inness Gold Medal, N.A.D., 1905. Work: "Washed by the Sea," Layton Museum, Milwaukee; "Broad Acres," Metropolitan Museum, New York; "Time and Tide," Public Library, Mount Vernon, N. Y.; "The Fields at Eastchester, N. Y.," Mount Vernon High School; "Waving Grain," Minneapolis Fine Arts Gallery; "The Hillside," National Gallery, Washington; "The Month of May," Chicago Art Institute; "Summer at Sound Beach," Art Museum, Montclair, N. J.

27
A Bit of Arizona \$400

ALBERT L. GROLL, N.A.

Born in New York, 1866. Pupil of Gysis and Loefftz in Munich. Member: A.N.A., 1906; N.A., 1910; N.Y.W.C.C.; A.W.C.S.; A. Fund Society; Salmagundi Club. Awards: Morgan Prize, Salmagundi Club, 1903; Honorable Mention, Munich; Shaw Prize, Salmagundi Club, 1904; Silver Medal, St. Louis Exp., 1904; Sesnan Medal, P.A.F.A., 1906; Medals, Buenos Aires and Santiago Exp., 1910; Inness Gold Medal, N.A.D., 1912; Silver Medal, P.-P. Exp., San Francisco, 1915. Work: "No Man's Land—Arizona," Corcoran Gallery, Washington; "California Redwoods" and "Washoe Valley, Nevada," Brooklyn Institute Museum; "Acoma Valley, New Mexico," National Gallery, Washington; "Hopi Mesa," Public Gallery Richmond, Ind.; "Laguna River, New Mexico," Art Museum, Montclair, N. J.; "Silver Clouds," Metropolitan Museum, New York; "The Milky Way," Minneapolis Institute of Arts. Specialty, Western scenes.

28 \$400
The Running Brook

29 \$400
The Old Hillside

CHARLES P. GRUPPE

Born in Pictou, Canada, 1860. Studied in Holland; chiefly self-taught. Awards: Gold Medal, Rouen, France; Gold Medal, Exhibition Paris et Province; two Gold Medals at Philadelphia Art Club; Gold Medal, Philadelphia Art Society; two Silver Medals at World's Fair, St. Louis, one for oil, one for water color; Bronze Medal, Knoxville, Tenn.; \$500 landscape prize, Osborne Co., New York. Member of Sulchre Studio at The Hague, Holland; St. Lucas, Amsterdam; Art et Amicitiae, Amsterdam; American Water Color Society; New York Water Color Club; Salmagundi Club; and of the Art Club of Philadelphia, Pa. He is represented in the library in Rouen, France, in the collection of the Queen of Holland, St. Louis Museum, Brooklyn Museum, Maryland Institute of Baltimore, Detroit Museum, and in the library at Seattle.

30 \$1500
A Family Affair

PHILIP L. HALE

Born at Boston, 1865. Son of Rev. Edward Everett Hale. Pupil of J. Alden Weir in New York. Member: Phila. A.C.; St. Botolph Club; Boston G.A.; A.N.A.; San Francisco A.C.; Fellowship P.A.F.A. Awards: Honorable Mention, Pan-American Exposition, Buffalo, 1904; Gold Medal, Buenos Aires Exposition, 1910; Harris Silver Medal (\$500), A.I.C., 1914; Hors Concours (Jury of Awards), P.-P. Exposition, San Francisco, 1915; Proctor Prize, N.A.D., 1916; Lea Prize, Phila. W.C.C., 1916. Instructor at Boston Museum and P.A.F.A. Work: Pennsylvania Academy, Philadelphia; Museum of Montevideo, Uruguay; Corcoran Art Gallery, Washington, D.C.; Philadelphia Art Club.

31 \$450
The Old Homestead

32 \$1000
The Stream

BIRGE HARRISON, N.A.

Born in Philadelphia, 1854. Pupil of Cabanel in Paris. Member: N.A., S.A.A., Nat Inst., A.L. Fellowship; P.A.F.A.; Century Association; N.A.C. (life); MacDowell Club; Ends of the Earth Club. Awards: Silver Medal, Paris Exposition, 1899; Medal, Columbian Exposition, Chicago, 1893; Bronze Medal, Pan-American Exposition, Buffalo, 1901; Second Corcoran Prize, S. Washington A., 1904; Silver Medal, St. Louis Exposition, 1904; Hors Concours, Paris Salon. Director and chief instructor, Summer Landscape School of A.S.L. of New York. Author of "Landscape Painting." Work: "The Mirror," Wilstach Gallery, Philadelphia; "Autumn Sunset" and "A Glimpse of the St. Lawrence," P.A., Philadelphia; "Fifth Avenue at Twilight," Museum of Art, Detroit; Museums at Quimper and Marseilles, France; Spartanburg, S. C.



No. 31 *The Old Homestead* Harrison

A Little Mexican

33

\$1200

ROBERT HENRI, N.A.

Born in Cincinnati, Ohio, 1865. Pupil of P.A.F.A., Julien Academy, and Ecole des Beaux-Arts in Paris. Studied in Spain and Italy. Member: S.A.A., 1903; A.N.A., 1905; N.A., 1906; National Institute; A.L.; Portrait Painter; MacDowell Club; American P.S. Awards: Silver Medal, Pan-American Exposition, Buffalo, 1901; Silver Medal, St. Louis Exposition, 1904; Harris Prize, A.I.C., 1905; Gold Medal, Art Club of Philadelphia, 1909; Silver Medal, Buenos Aires Exposition, 1910. Works: "La Neige," Luxembourg Gallery, Paris; "Young Woman in Black," Art Institute of Chicago; "The Equestrian," Carnegie Institute, Pittsburgh; "Girl with Red Hair," "The Equestrian," burg, S.C.; "Happy Hollander," Art Association, Dallas, Texas; "Dancer in Yellow Shawl," Gallery of Fine Arts, Columbus, Ohio; "Spanish Gypsy Girl," Art Association, New Orleans; "Laughing Girl," Brooklyn Museum; "Girl with Fan," Pennsylvania Academy of Fine Arts, Philadelphia.

34

Fall Plowing, Connecticut River Valley \$1200

WILLIAM H. HOWE, N.A.

Born at Ravenna, Ohio, 1846. Pupil of Otto de Thoren and Vuillefroy in Paris. Member: A.N.A., 1894; N.A., 1897; S.A.A., 1899; Nat. Inst. A.L.; Salmagundi Club, 1891; A. Fund Society; Lotos Club. Awards: Honorable Mention, New Orleans Exp., 1885; Honorable Mention, Paris Salon, 1886; Third Class Medal, Paris Salon, 1888; Silver Medal, Paris Exp., 1889; Temple Gold Medal, P.A.F.A., 1890; Grand Gold Medal, Crystal Palace, London, 1890; Gold Medal, Boston, 1890; Medal, Columbian Exp., Chicago, 1893; Gold Medal, California Midwinter Exp., 1894; Gold Medal, Atlanta Exp., 1895; Officier d'Academie, Paris, 1896; Chevalier of the Legion of Honor, 1899; Silver Medal, Pan-Am. Exp., Buffalo, 1901. Specialty, landscapes with cattle. Work: "My Day at Home," National Gallery, Washington, D. C.

35

The Fan

\$1000

WILLIAM A. B. KIRKPATRICK

Studied in Paris and London. Member: Boston Art Club.

36

Apple Blossoms

\$1000

ASTON LOUIS KNIGHT

Born in Paris, France, 1873. Pupil of Lefebvre, Robert Fleury, and of his father, Ridgway Knight, in Paris. Awards: Bronze Medal, Paris Exposition, 1900; Honorable Mention, Paris Salon, 1901; Gold Medal, Rheims Exposition, 1903; Gold Medal, Lyons Exposition, 1904; Gold Medal, Geneva Exposition, 1904; Gold Medal, Nantes Exposition, 1904; Third Class Medal, Paris Salon, 1905; Second Class Medal, Paris Salon, 1906; Gold Medal, A.A.S., 1907. Work: "The Torrent," Toledo Museum of Art.

37

Caldwell, Lake George

\$750

FREDERICK W. KOST, N.A.

Born in New York, 1861. Pupil of N.A.D., under William Macy. Member: S.A.A., 1889; A.N.A., 1900; N.A., 1906; A. Fund S.; Lotos Club. Awards: Hon. Mention, Paris Exp., 1900; Bronze Medal, Pan-Am. Exp., Buffalo, 1901; Silver Medal, St. Louis Exp., 1904. Work: "On the St. John River, N. B.," Pennsylvania Academy, Philadelphia; "Smithfield Marshes, Staten Island," Brooklyn Institute Museum; "Moonrise, Fox Hill," Art Museum, Montclair, N. J.

Ballet Girl in Blue 38 \$950

LOUIS KRONBERG

Born in Boston, Mass., 1872. Pupil of Museum of Fine Arts, Boston; A.S.L. of New York; Academie Julien under Benjamin-Constant, Laurens, and Collin in Paris. Member: Boston A.C.; Boston G.A.; Copley S.; Salmagundi Club. Awards: Longfellow traveling scholarship, Boston Museum, 1894 to 1897; Silver Medal, P.-P. Exp., San Francisco, 1915. Work: "Pink Sash," Metropolitan Museum, New York; "Behind the Footlights," Pennsylvania Academy of Fine Arts, Philadelphia; "Ballet Girl Preparing for the Dance," Boston Museum of Fine Arts; "Oriental Dancer," Herron Art Institute, Indianapolis.

Freshly Picked 39 \$250

JONAS J. LA VALLEY

Born at Rouse's Point, N. Y., 1858. Studied under and with a number of well-known artists.

The Harlem River 40 \$750

ERNEST LAWSON, N.A.

Born in California, 1873. Spent several years in France. Member: A.N.A., 1908; N.A., 1917; Contemporary Club; Am. P.S. Awards: Silver Medal, P.A.F.A., 1907; Gold Medal, A.A.S., 1907; First Hallgarten Prize, N.A.D., 1908; Gold Medal, P.-P. Exp., San Francisco, 1915; Altman Prize (\$500), N.A.D., 1916; Second W. A. Clark Prize (\$1500), and Corcoran Silver Medal, 1916; Inness Gold Medal, N.A.D., 1917. Work: "An Abandoned Farm," National Gallery, Washington; "The Swimming Hole," Art Museum, Montclair, N. J.; "Winter," Metropolitan Museum, New York; "Landscape in Winter," Brooklyn Museum; "Road at the Palisades," City Art Museum, St. Louis; "Boat House, Harlem River, Winter," Corcoran Gallery, Washington, D. C.

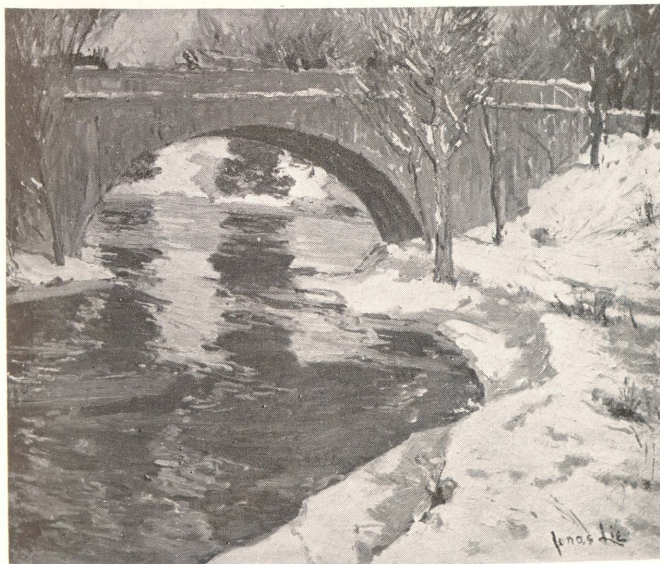
Bucking the Load 41 \$350

Bucking 42 \$600

WILLIAM R. LEIGH

Born in Berkeley Co., W. Va., 1866. Pupil of Maryland Institute, Baltimore, under Hugh Newell; under Raupp Gysis, Leoftz, and Linden-schmid in Munich. Member: Allied A.A. Awards: Honorable Mention, Paris Salon, 1892; two Silver and three Bronze Medals, Munich Academy; First Class Medal, Appalachian Exposition, Knoxville, Tenn., 1911. Work: Three portraits, Washington and Lee University; "Getting Acquainted," Nayasset Club, Springfield, Mass.

43



Winter Sun \$2200

JONAS LIE, A.N.A.

Born in Norway, 1880. Pupil of N.A.D. and A.S.L. of New York. Member: A.N.A., 1912; Am. P.S.; S. Indp. A. Award: Silver Medal, St. Louis Exp., 1904; First Hallgarten Prize (\$300), N.A.D., 1914; Silver Medal, P.-P. Exp., San Francisco, 1915; Greenough Memorial Prize, Newport A.A., 1916. Work: "Fishing Boats at Sunrise," Carnegie Institute, Pittsburgh; "The Conquerors," Metropolitan Museum, New York; "Culebra Cut," Detroit Museum; "Afterglow," Art Institute of Chicago; also represented in Peabody Institute, Baltimore, Md.; Memorial Art Gallery, Rochester, N. Y.; Museum of Art, Syracuse, N. Y.; Art Association of Dallas, Texas; Art Association of Lafayette, Ind.

44

Fishing Vessels in Gloucester Harbor \$1000

MARY FAIRCHILD LOW, A.N.A.

Born in New Haven, Conn., 1866. Pupil of St. Louis School of Fine Arts; Carolus-Duran, and Julien Academy in Paris. Member: S.A.A., 1896; A.N.A., 1906; International Woman's A.C., London. Awards: Paris Three Years' Scholarship from St. Louis School of Fine Arts; Medal, Columbian Exp., Chicago, 1893; Bronze Medal, Paris Exp., 1900; Bronze Medal, Pan-Am. Exp., Buffalo, 1901; Gold Medal, Dresden Exp., 1902; Julia Shaw Prize, S.A.A., 1902; Gold Medal, Rouen, 1911. Represented in Museum at Rouen, France.

45

Boat Building at Rockport \$1250

WILL H. LOW, N.A.

Born in Albany, N. Y., 1853. Pupil of Ecole des Beaux-Arts, under Gerome and of Carolus-Duran in Paris. Member: A.N.A., 1888; N.A., 1890; S.A.A., 1898; Mural Painters; N. Y. Arch. League, 1899; Century Assoc.; Lotos Club; Nat. Inst. A.L. Awards: Silver Medal for drawing, Paris Exp., 1889; Medal Columbian Exp., Chicago, 1893; Lotos Club Fund, N.A.D., 1895; Silver Medal, Pan-Am. Exp., Buffalo, 1901. Work: "The Orange Vender," Art Institute, Chicago; "Christmas Morn," National Gallery, Washington; "Aurora," Metropolitan Museum, New York. Mural decorations: ceiling of reception room, Waldorf Hotel, and ball room, Hotel Astoria, New York; panels in Essex Co. Court House, Newark, N. J.; Luzerne Co. Court House, Wilkesbarre, Pa.; Federal Building, Cleveland, Ohio; St. Paul's P. E. Church, Albany, N. Y.; "The Sylvan Year," Art Museum, Montclair, N. J.; Author: "A Chronicle of Friendship," "A Painter's Progress." Delivered Scammon course of lectures A.I.C., 1910.

46

Winter Sunset \$250

GEORGE H. McCORD, A.N.A.

1848-1909

Born in New York. Pupil of Prof. Moses Morse, 1866. First exhibited N.A., 1868. Silver Medal, Massachusetts Charitable Mechanics Exhibition, 1883; Medal, World's Fair, New Orleans, 1884. Elected A.N.A., 1880. Member: American Water Color Society, the Artists' Fund Society, and the Salmagundi Sketch Club.

47

Summer Clouds \$1500

WILLARD L. METCALF

Born in Lowell, Mass., 1858. Pupil of Museum of Fine Arts and George L. Brown in Boston; Boulanger and Lefebvre in Paris. Member: A.W.C.S.; Ten Am. P.; Nat. Inst. A.L. Awards: Honorable Mention, Paris Salon, 1888; Medal, Columbian Exp., Chicago, 1893; Webb Prize, S.A.A., 1896; Honorable Mention, Paris Exp., 1900; Silver Medal, Pan-Am. Exp., 1904; Temple Gold Medal, P.A.F.A., 1907; Gold Medal and First Prize, Corcoran Art Gallery, 1907; Harris Medal and Prize, A.I.C., 1910; Gold Medal, Buenos Aires Exp., 1910; Medal of Honor, P.A.F.A., 1911; Sesnan Medal, P.A.F.A., 1912; Medal of Honor, P.-P. Exp., San Francisco, 1915. Work: "May Night," Corcoran Gallery, Washington; "On the River," Cincinnati Museum; "May Pastoral," Museum of Fine Arts, Boston; "The Prelude," Worcester (Mass.) Art Museum; "The Family of Birches," "Blossom Time," "The White Pasture," National Gallery, Washington; "Twin Birches," Pennsylvania Academy, Philadelphia; "Unfolding Buds," Museum of Art, Detroit; "Ice Bound," Art Institute, Chicago; "The First Snow" and "The Partridge Woods," Boston Museum of Fine Arts; "The White Veil," Detroit Museum of Art; "Le Sillon," Hackley Art Gallery, Muskegon, Mich.; "Dogwood Blossoms," Carnegie Institute, Pittsburgh; "Summer Night," St. Louis Museum.

48

Little Red Riding Hood \$375

49

At the Fountain \$900

50

The Old Miser \$1500

HENRY MOSLER

Born in Cincinnati, Ohio. Pupil of James H. Beard, Cincinnati. Studied under Piloty in Paris. Honorable Mention, 1879, and his picture purchased for the Luxembourg, Paris; Medal, Universal Exposition, Nice, 1884; American Art Association Prize, 1885, and picture purchased for the Polytechnic Institution, Louisville, Ky.; also one for the Museum at Philadelphia were purchased the same year. Medal, Salon, Paris, 1888; Medal, Universal Exposition, Paris, 1889, also Hors Concours, 1889. Elected officer d'Academie, Paris, 1892, and Knight of the Legion of Honor, France. Received the Archduke Carl Ludwig Protector Medal at Vienna in 1893. Large Gold Medal and Diploma of Honor at Atlanta, Ga., in 1895. His "Village Tinker," in the Springfield Art Museum, was presented by the late John Olmsted.



No. 50

The Old Miser

Henry Mosler

51

Rio del Paradiso

\$600

DUDLEY MURPHY

Born in Marlboro, Mass., 1867. Pupil of Boston Museum School; Laurens in Paris. Member: Copley S., 1886; St. Botolph Club; Boston W.C.C.; N.Y.W.C.C.; Salmagundi Club; Boston S.A.C.; Boston G.A.; and National Arts Club. Awards: Bronze Medal, Pan-Am. Exp., Buffalo, 1901; Silver Medal for portrait and Bronze Medal for water colors, St. Louis Exp., 1904; Silver Medal for oil painting and Silver Medal for water colors, P.-P. Exp., 1915. Work: "Mt. Monadnock," Art Institute of Chicago; "The Opal Sunset," Art Association, Nashville, Tenn.; "Murano" and "Still Life," Albright Art Gallery, Buffalo, N. Y.; "Moro Castle, San Juan," Dallas (Texas) Museum of Fine Arts.

52

The Little Brown Jug

\$150

DOROTHY OCHTMAN

Born in Cos Cob, Conn., 1892. Studied at the National Academy of Design in New York and under Leonard Ochtman. Represented by "Sunrise" in the Bruce Museum, Greenwich, Conn. President of the Greenwich Society of Artists.

53

A Valley in Winter

\$650

54

Old Pastures

\$1200

LEONARD OCHTMAN, N.A.

Born at Zonnemaire, Holland, October 21, 1854; settled at Albany, N.Y., 1866. Self-taught. Member: S.A.A., 1891; A.N.A., 1898; N.A., 1904; A.W.C.S.; N.Y.W.C.C.; Brooklyn A.C., 1901; Lotos Club; Nat. Inst. A.L. Awards: Prize, Brooklyn A.C., 1891; Medal, Columbian Exposition, Chicago, 1893; Gold Medal, Philadelphia A.C., 1894; Silver Medal, Pan-American Exp., Buffalo, 1901; Silver Medal, Charleston Exposition, 1902; Morgan Prize, S.A.A., 1902; Shaw Fund Prize, S.A.A., 1902; Inness Gold Medal, N.A.D., 1903; Evans Prize, Salmagundi Club, 1903; Webb Prize, S.A.A., 1904; Second two Gold Medals (oil and water color), St. Louis Exposition, 1904; Corcoran Prize, S. Washington A., 1905; Rhead purchase, Richmond (Ind.) Club, 1905; Inness Prize, Salmagundi Club, 1906; Evans Prize, Salmagundi A.C., 1905; Inness Prize, Salmagundi Club, 1906; Evans Prize, Salmagundi Club, 1907; Medal of Second Class, Knoxville Exposition, 1911. Work: "Winter Light," Metropolitan Museum, New York; "November Morning," Corcoran Gallery, Washington; "Frosty Acres," City Art Museum, St. Louis; "Silent Morning," Columbus (Ohio) Gallery of Art; "Morning Haze," Evans collection, National Gallery, Washington; "A Gray Morning," Brooklyn Institute Museum.

55

Spring

\$150

MINA FONDA OCHTMAN

Born in Laconia, N. H., 1862. Pupil of A.S.L. in New York and of Leonard Ochtman. Member: A.S.L. of N.Y.; A.W.C.S. (Assoc.); Women's P.S.; Chicago W.C.C.; Greenwich S.A.

56

Memories

\$1000

IVAN G. OLINSKY, A.N.A.

Born in Russia, 1878. Studied at N.A.D. and in France and Italy. Member: Mural P.; N.Y. Arch. League; Salmagundi Club; Philadelphia A.C.; A.A.S.; N.A.C. Award: Clarke Prize (\$300) N.A.D., 1914. Work: "Ada," Omaha Society of Fine Arts; "Young Girl," Detroit A.C.; "Gossip," Dallas (Tex.) Art Association; "Old-fashioned Gown" and "Two Girls," Detroit Museum.

57



Venetian Morning

\$500

WALTER L. PALMER, N.A.

Born in Albany, August 1, 1854. Pupil of F. E. Church at Hudson, N. Y.; Carolus-Duran in Paris. Member: A.N.A., 1887; N.A., 1897; S.A.A., 1881; N.Y.W.C.C.; A.W.C.S.; Salmagundi Club, 1901; Pastel; Century Assoc.; Union Internationale des Beaux Arts et des Letters. Awards: Second Hallgarten Prize, N.A.D., 1887; Medal, Columbian Exposition, Chicago, 1893; Gold Medal, Art Club of Philadelphia, 1894; Evans Prize, A.W.C.S., 1895; First Prize, Boston, 1895; Second Prize, Tennessee Centennial Exposition, Nashville, 1897; Honorable Mention, Paris Exposition, 1900; Silver Medal for water color, Charleston Exposition, 1902; Silver Medal for water color, Pan-American Exposition, Buffalo, 1901; Silver Medal for water color and Bronze Medal for oil, St. Louis Exposition, 1904; Silver Medal, Philadelphia, 1907; Bronze Medal, Buenos Aires Exposition, 1910. Specialty: winter landscapes. Work: "Sundown at Walpole, N.H.," Buffalo Fine Arts Academy, Buffalo, N. Y.; "The Pasture Fence," Public Gallery, Richmond, Ind.

58

The Macaw

\$1500

WILLIAM MCGREGOR PAXTON, A.N.A.

Born in Baltimore, Md., 1869. Pupil of Ecole des Beaux-Arts in Paris under Gerome; Dennis M. Bunker in Boston. Member: Copley S., 1894; Boston G.A.; St. Botolph Club, Boston; Phila. A.C.; A.N.A., 1917. Awards: Honorable Mention, Pan-Am. Exp., Buffalo, 1901; Bronze Medal, St. Louis Exp., 1904; Lippincott Prize, P.A.F.A., 1915; Hors Concours (jury of awards), P.-P. Exp., San Francisco, 1915. Work: "A Girl Sweeping," Pennsylvania Academy, Philadelphia; "Tea Leaves," Metropolitan Museum, New York. Mural decoration, Army and Navy Club, Washington, D.C.; "Nude," Museum of Fine Arts, Boston.

59



Shadows

\$150

HARLEY PERKINS

Pupil of Edmund C. Tarbell, Frank W. Benson and Joseph R. DeCamp. Member of Boston Art Club. Represented in private collections and in current American Exhibitions.

60

The Street Singer

\$500

MARION LOUISE POOKE

Pupil of Massachusetts Normal Art School, Boston; School of the Museum of Fine Arts, Boston. Member: Conn. A.F.A. Awards: Silver Medal, P.-P. Exp., San Francisco, 1915; Hudson Prize, Conn. A.F.A., 1917. Instructor in Art, Abbot Academy, Andover, Mass.; and Walnut Hill School, Natick, Mass.

61

Late October

\$150

62

In the Litchfield Hills

\$250

WILLIAM MERRITT POST, A.N.A.

Born in Brooklyn, N. Y., 1856. Pupil of Frost Johnson, and of the Art Students' League of New York under J. Carroll Beckwith. Member: A.W.C.S.; N.Y.W.C.C.; A. Fund S. (treas.); Salmagundi Club; Conn. A.F.A. Award: Honorable Mention, Pan-American Exposition, Buffalo, 1901. Work: Landscape, Newark Museum Association; "Clouds of Evening," exhibited at the 1919-1920 Academy Exhibition, price \$1000, was sold there.

63

In the Surf

\$300

64

The Beach at Rockaway

\$1000

EDWARD H. POTTHAST, N.A.

Born in Cincinnati, O., 1857. Pupil Cincinnati Academy; studied in Antwerp, Munich and Paris. Member: S.A.A., 1902; A.W.C.S.; N.Y.W.C.C.; Nat. Inst. A.L.; Salmagundi Club; Lotos Club; Allied A.A. Awards: Clarke Prize, N.A.D., 1899; Evans Prize, A.W.C.S., 1901; Inness Prize, Salmagundi Club, 1904; Silver Medal, St. Louis Exposition, 1904; Morgan Prize, Salmagundi Club, 1904; Inness Prize, Salmagundi Club, 1905; Hudnot Prize (\$200), A.W.C.S., 1914; Silver Medal, P.-P. Exposition, San Francisco, 1915. Work: Cincinnati Museum; Brooklyn Institute Museum; Hackley Art Gallery, Muskegon, Mich.; Chicago Art Institute.



No. 64

The Beach at Rockaway

E. H. Potthast

65

In February

\$200

ARTHUR J. E. POWELL

Born at Van Wert, Ohio, 1864. Pupil San Francisco School of Design; St. Louis School of Fine Arts; Julien Academy, Toudouze and Ferner in Paris. Member: Salmagundi Club, 1904; Paris, A.A.A.; A. Fund S.; Kit Kat Club; Allied A.A.; N.A.C. (life). Award: Vezein Prize (\$100), Salmagundi Club, 1913.

Near Noank	66	\$350
Wood Interior	67	\$350

HENRY W. RANGER, N.A.
1858-1916

Born in Syracuse, N. Y. He commenced his art studies early in life, in this country, afterwards studied in Europe, but was mainly self-taught. A very prominent figure in the Art world. Elected A.N.A. in 1901 and N.A. in 1906, also a member of A.W.C.S., Lotos Club, National Arts Club, and Rochester Art Club. Awards: Bronze Medal, Paris Exp., 1900; Silver Medal, Pan-Am. Exp., Buffalo, 1901; Gold Medal, Charleston Exp., 1902. Works in public galleries include: "High Bridge" and "Spring Woods," Metropolitan Museum, New York; "The Top of the Hill," Corcoran Gallery, Washington; "An East River Idyl," Carnegie Institute, Pittsburgh; "Landscape," Toledo Museum of Art; "A Group of Oaks," Fine Arts Academy, Buffalo, N. Y.; "Entrance to the Harbor," "Connecticut Woods," "The Cornfield," "Bradbury's Mill Pond No. 2," and "Groton's Long Point Dunes," National Gallery, Washington; "Sheep Pasture," Penn. Acad., Philadelphia; "Spring Woods," and "Lodge in the Woods," Brooklyn Institute Museum; "A Noank Street," Art Museum, Montclair, N.J. He left the greater part of his estate to the National Academy of Design.

Brook and Meadow	68	\$1500
------------------	----	--------

EDWARD W. REDFIELD, N.A.

Born at Bridgeville, Del., 1868. Pupil of P.A.F.A.; Bouguereau and Robert Fleury in Paris. Member: S.A.A., 1903; Nat. Inst. A.L.; A.C., Philadelphia, 1896; Fellowship P.A.F.A. Awards: Medal, A.C., Philadelphia, 1896; Bronze Medal, Paris Exp., 1900; Bronze Medal, Pan-Am. Exp., Buffalo, 1901; Temple Medal, P.A.F.A., 1903; Second Hallgarten Prize, N.A.D., 1904; Shaw Fund Prize, S.A.A., 1904; Silver Medal, St. Louis Exp., 1904; Sesnan Gold Medal, P.A.F.A., 1905; Second Medal, C.I., Pittsburgh, 1905; Webb Prize, S.A.A., 1906; Gold Medal of Honor, P.A.F.A., 1907; Fischer Prize and Bronze Medal, Corcoran Art Gallery, 1907; First W. A. Clark Prize and Gold Medal, Corcoran Art Gallery, 1908; Honorable Mention, Paris Salon, 1908; Third Class Medal, Paris Salon, 1909; Second Harris Medal, A.I.C., 1909; Gold Medal, Buenos Aires Exp., 1910; Lippincott Prize, P.A.F.A., 1912; Gold Medal, Wash. S. A., 1913; Palmer Gold Medal (\$1000), A.I.C., 1913; Gold Medal (\$1500), C.I., Pittsburgh, 1914; Hors Concours (jury of awards), P.-P. Exp., San Francisco, 1915. Work: "Canal in Winter," Luxembourg Museum, Paris; "The Delaware River" and "Sleighbing," Corcoran Gallery, Washington; "Road to the Village," Cincinnati Museum; "Sycamore Hill," Carnegie Institute, Pittsburgh; "The Ravine," Boston Museum; "The Old Elm," Pennsylvania Academy, Philadelphia; "February," Brooklyn Institute Museum; "The Crest," Herron Art Inst., Indianapolis; "Grey Days," Detroit Museum; "Center Bridge," Art Institute of Chicago; "The Laurel Brook," Buffalo Fine Arts Academy; "River in Winter," Minneapolis Institute of Arts; "Snowdrifts," R. I. School of Design, Providence; "Over-looking the Valley," Metropolitan Museum, New York.

69



October

WILLIAM S. ROBINSON, N.A.

\$500

Born in East Gloucester, Mass., 1861. Studied in Boston, France, and Holland. Member: A.N.A., 1901; N.A., 1911; A.W.C.S.; N.Y.W.C.; Boston Artists' Club; Salmagundi Club, 1897; Lotos Club. Awards: Honorable Mention, Paris Exposition, 1900; Honorable Mention, Pan-American Exposition, Buffalo, 1901; Gold Medal, Artists' Aid Society, 1902; Bronze Medal, St. Louis Exposition, 1904; Carnegie Prize, N.A.D., 1910. Represented in the Carnegie Institute, Pittsburgh, by "The Golden Bough."

Sunset

WARREN SHEPPARD

70

\$550

Born in Greenwich, N. Y., 1855. Studied perspective in Cooper Union, New York. In painting, self-taught. Studied nature on coast of Maine and New York. In painting, self-taught. Studied nature on coast of Maine and New York. First exhibited, N.A.D., 1878. Gold Medal, 1844. Is represented in Albright Galleries, Buffalo; Detroit Museum, and Springfield City Library.

White Birches	71	\$800
Clearing	72	\$1500

R. M. SHURTLEFF, N.A.
1838-1915

Born in Rindge, N. H. Pupil of Lowell Institute in Boston, N.A.D. in New York. Member: A.N.A., 1880; N.A., 1890; A.W.C.S.; Salmagundi Club, 1888; Artists' Fund Society; Lotos Club. Awards: Bronze Medal, Pan-American Exposition, Buffalo, N. Y., 1901; Bronze Medal, St. Louis Exposition, 1904; Evans Prize, A.W.C.S., 1910. Work: "The First Snow," Corcoran Gallery, Washington, D. C.; "The Mysterious Woods," National Gallery, Washington, D. C.; "A Mountain Stream," Metropolitan Museum, New York. Represented in Art Museum, Springfield, Mass., Erie Art Gallery Erie, Pa., and in some of the most noted private collections in this country.

Sand Dunes	73	\$400
------------	----	-------

GEORGE H. SMILLIE, N.A.

Born in New York, 1840. Pupil of James M. Hart. Member: A.N.A., 1864; N.A., 1882; A.W.C.S.; Century Association; Lotos Club. Awards: First Prize, American Art Association, New York, 1885; Bronze Medal, St. Louis Exposition, 1904; Silver Medal, A.A.S., Philadelphia, 1907. Represented in the Corcoran Gallery, Washington; Union League Club, Philadelphia; Metropolitan Museum and Lotos Club, New York; R. I. School of Design, Providence, and Public Library, Erie, Pa.

The Village	74	\$100
-------------	----	-------

E. GREGORY SMITH

Born in Grand Rapids, Mich., 1880. Studied in the galleries of Chicago and other cities and exhibits in the National Academy and elsewhere.

An Autumn Landscape	75	\$550
---------------------	----	-------

WALTER GRANVILLE SMITH

Born in S. Granville, N. Y., 1870. Pupil of Walter Satterlee and A.S.L. of New York. Studied in Europe. Member: A.N.A., 1908; N.A., 1915; A.W.C.S.; Salmagundi Club, 1898. Awards: Third Hallgarten Prize, N.A.D., 1900; Bronze Medal, Charleston Exp., 1902; Evans Prize, A.W.C.S., 1905; First Prize, Worcester, 1906; Honorable Mention, C.I., Pittsburgh, 1907; Inness Gold Medal, N.A.D., 1908; Bronze Medal, Buenos Aires Exp., 1910; Veizin Prize, Salmagundi Club, 1911; Shaw Purchase Prize (\$500), Salmagundi Club, 1913; Hudnot Prize (\$200), A.W.C.S., 1916.



No. 75 *An Autumn Landscape* W. G. Smith

A Quiet Haven	76	\$350
---------------	----	-------

HENRY B. SNELL, N.A.

Born in Richmond, England, 1858. Pupil of A.S.L. of New York. Member: N.Y.W.C.C. (pres.); A.W.C.S.; A.N.A., 1902; N.A., 1906; S.A.A., 1905; Salmagundi Club, 1903; Lotos Club; Fellowship P.A.F.A., 1916 (assoc.); N.A.C. Awards: Gold Medal, A.C., Philadelphia, 1896; First Prize, Nashville Exp., 1897; Honorable Mention, Paris Exp., 1900; Silver Medal, Pan-Am Exp., Buffalo, 1901; Silver Medal, St. Louis Exp., 1904; First Prize (\$300), Worcester Museum, 1905; Beal Prize, N.Y.W.C.C., 1905; Silver Medal for oil painting and Gold Medal for water colors, P.-P. Exp., San Francisco, 1915. Assistant director of Fine Arts, U. S. Commission Paris Exp., 1900. Work: "The Citadel at Quebec," Albright Art Gallery, Buffalo; "Entrance to the Harbor of Polperro," Worcester Museum; "Nightfall," Herron Art Institute, Indianapolis; "Lake Como," Metropolitan Museum, New York.

Autumn Reflections 77 \$1200

GARDNER SYMONS, N.A.

Born in Chicago, Ill., 1863. Pupil of A.I.C.; studied in Paris, Munich, and London. Member: N.A.; Royal Society of British Artists; Union Internationale des Beaux-Arts et des Lettres; S.W.A.; Salmagundi Club; N.A.C. (life); Chicago S.A.; Century Association. Awards: Carnegie Prize, N.A.D., 1909; Evans Prize, Salmagundi Club, 1910; Bronze Medal, Buenos Aires Exposition, 1910; N.A.C. Prize and Gold Medal, 1912; Saltus Medal, N.A.D., 1913. Work: "The Opalescent River," Metropolitan Museum, New York; "Snow Clouds," Corcoran Gallery, Washington; "Sorrow," Cincinnati Museum; "Snow-Clad Fields in Morning Light," Toledo Museum; "The Top of the Hill and Beyond" and "Winter Sun," Art Institute, Chicago; "Through Snow Clad Hills and Valley," City Art Museum, St. Louis; "Through Wooded Hills," Art Association, Dallas, Texas; "Deerfield River," Brooklyn Institute Museum; "River in Winter," Minneapolis Institute of Arts; "November, Dachau, Germany," Carnegie Institute, Pittsburgh.

The Harbor 78 \$1500

JOHN H. TWACHTMAN

1853-1902

Born in Cincinnati, Ohio, 1853. Died Gloucester, Mass., 1902. Pupil of the National Academy of Design, New York, and of Frank Duveneck in Cincinnati, Munich, and Italy; also studied at the Academie Julien, and with Boulanger and Lefebvre in Paris. Was the organizer of the "Ten American Painters" in 1898. Awards: Medal, World's Columbian Exp., Chicago, 1893. Webb Prize, Society of American Artists, 1894; Temple Gold Medal, Pennsylvania Academy of Fine Arts, Philadelphia, 1894; Silver Medal, Pan-Am. Exp., Buffalo, 1901. Represented in Metropolitan Museum, New York, The Hillyer Art Gallery at Smith College, Northampton, Mass., the Pennsylvania Academy of Fine Arts, etc.

Left by the Tide 79 \$250

Rising Mist 80 \$450

JAMES G. TYLER

Born in Oswego, N. Y., 1855. Pupil of A. Cary Smith. Member: Brooklyn A.C., Salmagundi Club; Artists' Fund Society.

A Fisherman 81 \$250

T. V. C. VALENKAMPH

Member: Boston Art Club.

Keene Valley 82 \$350

Summertime, at Wakefield, R. I. 83 \$1200

Midsummer, at Peacedale, R. I. 84 \$1000

ROBERT W. VAN BOSKERCK, N.A.

Born in Hoboken, N. J., 1855. Pupil of R. Swain Gifford and A. H. Wyant in New York. Member: A.N.A., 1897; N.A., 1907; S.A.A., 1887; Lotos Club; Artists' Aid Society. Awards: Silver Medal, Pan-American Exposition, Buffalo, 1901; Silver Medal, St. Louis Exposition, 1904. Represented in Union League Club and Lotos Club, New York; Layton Art Gallery, Milwaukee. His pictures have been purchased by several noted collectors.

A Connecticut Field 85 \$500

ALEXANDER T. VAN LAER, N.A.

Born at Auburn, N. Y., 1857. Pupil N.A.D. and R. Swain Gifford in New York; George Poggenbeck in Holland. Member: A.N.A., 1901; N.A., 1909; A.W.C.S.; N.Y.W.C.C.; Conn. A.F.A.; Lotos Club (life). Awards: Bronze Medal, Charleston Exp., 1902; Gold Medal, St. Louis Exp., 1904. Work: "April Day," Lotos Club, New York; "February Snow," Brooklyn Institute Museum; "Connecticut Hillside," National Gallery, Washington; "Westchester Valley," National Arts Club, New York; "Autumn Day" and "Westchester Hills," Art Museum, Montclair, N. J.; "On the Brandywine," Herron Art Institute, Indianapolis.



No. 84 *Midsummer, at Peacedale, R. I.* R. W. Van Boskerck

October Moon 86 \$350

87

Autumn Oaks and Hilly Pastures \$300

ROBERT VONNOH, N.A.

Born in Hartford, Conn., 1858. Pupil Mass. Normal Art School in Boston; Julien Academy in Paris under Boulanger and Lefebvre. Member: S.A.A.; N.A.C.; N.Y. Arch. League; Boston A.C.; Lotos Club; Salmagundi Club; Fellowship P.A.F.A.; Allied A.A.; Munich Secession (Cor.). Awards: Honorable Mention, Paris Salon, 1889; Bronze Medal, Paris Exposition, 1889 and 1900; Medal, Pan-American Exposition, Buffalo, 1901; Medal, Charleston Exposition, 1901; Proctor Prize, N.A.D., 1904; Gold Medal, P.-P. Exposition, San Francisco, 1915. Represented in P.A.F.A. and College of Physicians, Philadelphia; Buffalo Club, Buffalo, N.Y.; Union League Club, Philadelphia; Department of Justice, Washington, D. C.; Post Office Department, Washington, mostly by portraits.

88

La Romantica—Spanish Dancer \$900

HARRY W. WATROUS, N.A.

Born in San Francisco, Cal., 1857. Pupil of Bonnat, Boulanger and Lefebvre in Paris. Member: A.N.A., 1894; N.A., 1895 (cor. sec. 1898-); S.A.A., 1905; A. Aid Soc.; Lotos Club; Century Assoc. Awards: W. A. Clark Prize, N.A.D., 1894; Bronze Medal, Pan-Am. Exp., Buffalo, 1901. Special Commemoration Gold Medal, St. Louis Exp., 1904. Work: "Passing of Summer," Metropolitan Museum, New York; "A Vision of Love," Montpelier (Vt.) Museum; "A Study in Black," City Art Museum, St. Louis; "An Auto-Suggestion," Buffalo Fine Arts Academy.

89

Surf of the Far North \$1500

FREDERICK J. WAUGH, N.A.

Born at Bordentown, N. J., 1861. Pupil of P.A.F.A.; Academie Julien in Paris. Member: A.C., Phila.; A.N.A., 1909; N.A., 1911; Salmagundi Club, 1908; Lotos Club; N.A.C. (life); Conn. A.F.A. Awards: Clarke Prize, N.A.D., 1910; Harris Bronze Medal and \$300, A.I.C., 1912; Prize (\$100), Conn. A.F.A., 1915; Silver Medal, P.-P. Exp., San Francisco, 1915. Work: "Roaring Forties" and "The Great Deep," Metropolitan Museum, New York; "The Outer Surf," "Surf and Fog, Monhegan," Art Institute, Chicago; "The Coast," Museum of Art, Toledo, Ohio; "After a Northeaster" and "South-westly Gale, St. Ives," National Gallery, Washington; "Under the Full Moon," Brooklyn Institute Museum; "Evening, Coast of Maine," Art Museum, Montclair, N. J.; "The Blue Gulf Stream," Pennsylvania Academy of Fine Arts. Represented in Bristol (Eng.) Academy; Walker Art Gallery, Liverpool; Durban Art Gallery, South Africa.

90

Near Arkville \$1600

ALEXANDER H. WYANT, N.A.

1836-1892

Born in Defiance, Ohio. Exhibited great talent for drawing as a boy. Moved to Cincinnati in the early fifties and commenced painting, and when about twenty years old went to New York and showed some of his sketches to George Inness, who encouraged him to continue. Went to Karlsruhe and studied under Hans Gude, to whom is traced his emphasis of form, construction, and dignity of composition. Subsequently studied in London and New York. When with Government Exploring Expedition he met accidents and privations which resulted in paralysis, so that, after 1869, he was compelled to paint with his left hand. Painted for many years in Keene Valley, Adirondacks, and later in Arkville in the Catskill Mountains, where most of his best work was done.

Edge of the River 91 \$350
92



Pulpit Rock, Ogunquit \$500

Autumn 93 \$800

CULLEN YATES, A.N.A.
Born in Bryan, O., 1866. Pupil N.A.D., Chase and Ochtman in New York; Ecole des Beaux-Arts, Colarossi and Julien Academies under Laurens and Constant in Paris. Member: A.W.C.S.; N.Y.W.C.C.; N.A.C.; Lotos Club; Salmagundi Club; N.A.C. (life); Allied A.A. Awards: Bronze Medal, St. Louis Exposition, 1904; Inness Prize, Salmagundi Club, 1907. Represented in National Gallery, Washington; City Art Museum, St. Louis; Seattle (Wash.) Gallery; Art Club, Philadelphia; Montclair (N. J.) Gallery; Brooklyn Institute Museum; Art Museum, Montclair, N. J.

94 \$1000
Winter Evening

CHARLES MORRIS YOUNG, A.N.A.

Born in Gettysburg, Pa., 1869. Pupil of P.A.F.A.; Colarossi Academy in Paris. Member: A.C. Philadelphia; Fellowship P.A.F.A.; Philadelphia W.C.C. Awards: Toppan Prize, P.A.F.A.; Honorable Mention, Pan-Am. Exp., Buffalo, 1901; Silver Medal, St. Louis Exp., 1904; Gold Medal, A.C. Philadelphia, 1908; Honorable Mention, C.I., Pittsburgh, 1910; Silver Medal, Buenos Aires Exp., 1910; Gold Medal, P.-P. Exp., San Francisco, 1915. Work: "Winter Morning After Snow," Pennsylvania Academy, Philadelphia, Pa.; "After an April Shower" and "The North Wind," Corcoran Gallery, Washington. Represented in Boston Art Club, St. Louis Art Club, Budapest National Gallery, and Albright Art Gallery, Buffalo.

Press Notices.

The Springfield Republican, Jan. 18, 1920

James D. Gill's 43d annual exhibition of American paintings will occupy his galleries in the Brewer building on State street throughout the month of February, and will be, as for all these years, favorably representative of our academic art. It will contain 90 works by 72 artists; and 12 of these artists have never shown here before, and are of the younger generations, but not of the radical innovators. A good many of the notable elders are represented: the great landscapist, Wyant; that remarkable genius, Twachtman; the painter of the forest depths, R. M. Shurtleff; the masterly Enneking; Harry W. Ranger, the colorful McCord,—these among the men whom death has removed; while others are the veteran Edward Gay; the younger veteran, George H. Smillie; the cattle painter, Craig; the painters of ships, James G. Tyler, Willard Metcalf, and the Eatons, besides Frank M. Boggs, as industrious and clever as he was some 46 years ago. It is an imposing list of names which we shall append to this introductory paragraph; and Mr. Gill, selecting their work with that approved judgment which has maintained this unrivaled series for so long a time, may confidently commend the result to the people whom they have familiarized with the best of American oil painting—and there is no better at the present time.

Hartford Times, Jan. 16, 1920

American artists look forward each year to the Springfield exhibition conducted since 1878 by Mr. James D. Gill, and this year, with seventy-two artists represented by ninety paintings, the exhibition should be not only of special interest but of an unusually high order. Such noted artists as Ranger, Carlson, Crane, Dickinson, Lawson, Lie, Symons, Twachtman, Wyant, Harrison, Henri and Redfield will exhibit.

Press Notices.

The Springfield Union, Jan. 24, 1920

The veteran art connoisseur, James D. Gill, is arranging what is to be perhaps the most elaborate of any of his many exhibitions in Springfield, called in his handsome new catalog the "43d Annual," and containing some of the finest specimens of the work of American artists in oils ever collected in one New England grouping.

Mr. Gill has a high standard, and a painting has to be a thoroughly good one before it can be put on his list of "eligibles."

His rooms in the Brewer building, 121 State street, just around the corner from Main, are well lighted and admirably adapted to the display of these canvases; and judging from past experience, the art lovers of Springfield will frequently, during February, be found there between 10 and 5 daily.

Hartford Courant, Jan. 18, 1920

Gill's 43d annual exhibition of American paintings at Springfield will open early in February and such artists as Redfield, Henri, Shurtleff, Ranger, Jonas Lie, Sidney Dickinson, and Carlson will be represented. There will be about seventy artists represented by ninety examples, insuring an interesting exhibition with examples worth while. Gill's exhibition in Springfield has been eagerly looked forward to for many years, and is as well known as the Cooley House there used to be known for its custard pie.

BAKER'S EXTRACTS

THE GROCER



is a busy man and hasn't time to tell people what they ought to eat—he sells them what they order, so if you do not get BAKER'S *pure fruit* EXTRACTS it is your fault, not his

BAKER'S COME
BY ASKING

Baker Extract Company

1000

Rooms

Every

Bedroom

Equipped

with

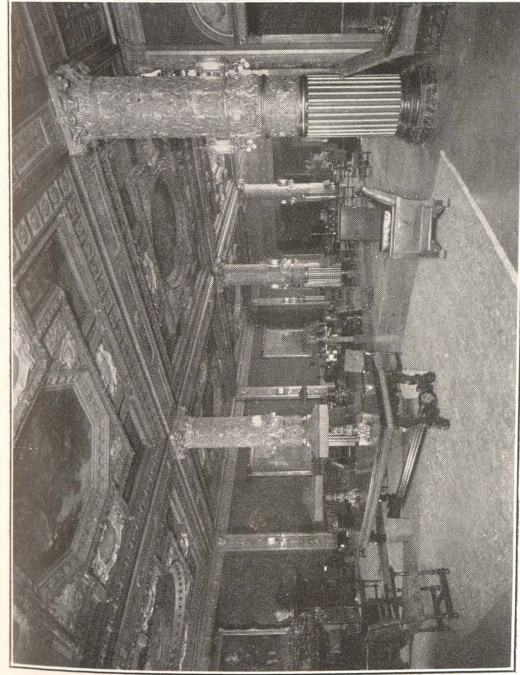
Bath

and

Shower

\$2.00

and up



GRAND FOYER

PRINCE GEORGE HOTEL, NEW YORK

28th STREET, NEAR FIFTH AVENUE

Center
of
Shopping
and
Theaters
with
Elevated
and
Subway
Stations
One Block

GEORGE H. NEWTON, Manager

WILL BUY OUTRIGHT

OR

Will Sell on Commission

EXAMPLES BY

Blakelock, Carlsen, Copley, Dainger-
field, Davis, Fuller, Harding,
Hassam, Homer, Inness,
Martin, Moran,
Murphy, Remington, Stuart,
Twachtman, Weir, Wyant.

APPRAISALS

of American Paintings, for a reasonable com-
pensation, wherever located. Portrait
Commissions executed with satis-
faction at regular price of
the artist

James D. Gill

GILL'S ART ROOMS

121 State Street

SPRINGFIELD, MASSACHUSETTS

Telephone—River 875



When the Car Needs

A

NEW TOP

The coming season, you will no doubt want your car fitted with a fine snappy top with plate-glass lights, or perhaps some attractive, soft upholstery in the car. We are well prepared to fit you up right, and our prices compare favorably with any of the HIGH GRADE top makers in this vicinity.

See us early and have the work done while we are painting the car.

M. J. DUNN & CO.,

30 to 44 Patton Street

Springfield, Mass.

MINER'S BEST COCOA



You will prefer this delicious food beverage to any other you ever tried.

You will like its flavor.

You will benefit by its use.

You will appreciate its economy.

ORDER TO-DAY YOUR GROCER

W. H. MINER CHOCOLATE CO.

Springfield, Mass.

A DE LUXE VOLUME

So flexible, so portable, so readable that consulting it is a pleasure, and withal it is a work of art

The most discriminating express admiration and satisfaction. Opaque India paper and semi-flexible binding make possible this latest format.



WEBSTER'S New International Dictionary

India-Paper Edition

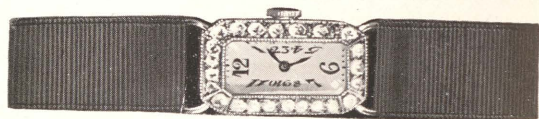
This is the latest and best of a long family of Merriam Websters, each the recognized authority in its time. 2700 Pages. 6000 Illustrations.

Your bookseller will gladly supply the new Dictionary, or address the publishers,

G. & C. MERRIAM CO., Springfield, Mass., U. S. A.

Jensen's
319 MAIN
SPRINGFIELD, MASS.

TRUE BROTHERS, JEWELERS
"The Jewel Store of Springfield"



**A Nine Hundred and Seventy-five
Dollar Watch**

A very high-grade, fifteen-jewel movement, placed in an exquisite hand-made case of solid platinum, ornamented with twenty-four finely cut perfect diamonds. The cut shows the exact size. This is one of the most beautiful and unusual watches we have ever shown. We have several others of this type which we would like to show to you.

408 Main St., 6 Pynchon St., Springfield, Mass.

The Old Corner Decorating Co.

Incorporated

Interior and Exterior Painting

Artistic Wall Papers

The Only Manufacturers of Leaded Glass in the City

164 Bridge Street, Springfield, Mass.

Telephone, River 53

F. W. Havens, Pres.

W. H. Strout, Sec.

D. H. Brigham & Company

Announce an Unusual
Early Showing of

Spring Apparel

in all departments



THE FRENCH SHOP

Exclusive Millinery



Our First Showing of Imported Models
March 10, 11, 12

You are cordially invited to attend

THE BREWER BUILDING

121 State Street Springfield, Mass.



THE WOMAN'S SHOP

419-421 Main St., Springfield

Three spacious floors exclusively devoted
to Newest Fashions in

OUTER APPAREL

of

Individuality and Distinction



*Artists
and
Engravers
for 28 years*

SPRINGFIELD PHOTO-ENGRAVING Co.
ALBERT W. BUCKLEY JOHN J. DUNNE CLIFFORD S. BURDICK

RICHTER & CO.

Members New York Stock Exchange

Hartford

Springfield

New Britain

Waterbury

**Investments
Local Securities**

James E. Alden, Manager

Tels. River 5922-5923

DRUGS

DEFRATE & RALEIGH

188 STATE STREET

SPRINGFIELD, MASS.

FOUR STERLING
AMERICAN PIANOS

MASON & HAMLIN

SOHMER

KURTZMANN

R. S. HOWARD

TAYLOR'S MUSIC HOUSE

F. G. HOWE, PROPRIETOR

SPRINGFIELD
TEL. R-525

NORTHAMPTON
TEL. 87-W

— CARLISLE'S FOR CONSERVATION —

OUR ELECTRIC DEPARTMENT

Is prepared to supply the housewives
of Springfield with efficient

HELP

that never tires, never complains, and never asks
for higher wages

ELECTRIC

Washing Machines, Vacuum Cleaners, Irons, Toasters,
Percolators, Chafing Dishes, Tea Pots

CARLISLE HARDWARE CO.

Carlisle Building

326 MAIN STREET

DAVID C. COE

INVITES ATTENTION TO THE NEW DEPART-
MENT OF HIS UNUSUAL ESTABLISHMENT---A
SHOP WHEREIN THE DISCRIMINATING MAY
REVEL IN AND SELECT FROM THE UTMOST
IN FASHIONABLE

IMPORTED HABERDASHERY

HERE MAY BE FOUND THE DISTINCTIVE IN
CRAVATS, NOTABLE MARK CROSS ENGLISH
GLOVES, THE WELCH-MARGETSON LONDON
COLLARS, DRESS SHIRTS, AND THE CORRECT
ACCESSORIES, FINE HOSE, MODISH MUF-
FLERS, AND THE NEWEST IDEAS IN ALL
SMART HABERDASHERY

MERCHANT TAILORING AND
IMPORTED HABERDASHERY
— THE COE BUILDING —
— ON VERNON STREET —

WHOLESOME

It is not LUCK or CHANCE that makes every TEL and TEL
CIGAR so RICH and WHOLESOME

It is the CARE and EFFICIENCY by which the IMPORTED
HAVANA FILLER and GENUINE SUMATRA WRAP-
PER are blended to produce

WHITCOMB'S
TEL and TEL
⇒ CIGAR ⇐

PRODUCED IN THREE STYLES

The rich and snappy after-dinner PERFECTOS
The pleasant, free smoking LONDRES
And the mild and fragrant PANETELAS

JOSEPH WHITCOMB & CO.
MANUFACTURERS

